

Corners to be Indexed

N1/4 26-108-40

SEP 27 2023

Karen Brown

I hereby certify that this document and the data contained herein was prepared by me or under my direct supervision.

[Signature]

6/26/2023
Date

Daniel L. Buetel

License No. 43844

CERTIFICATE OF LOCATION OF GOVERNMENT CORNER

Land survey monuments situated in Section 26, Township 108, Range 40, 5TH P.M.

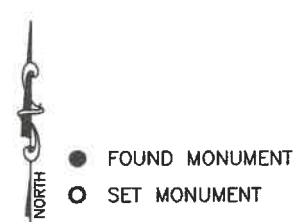
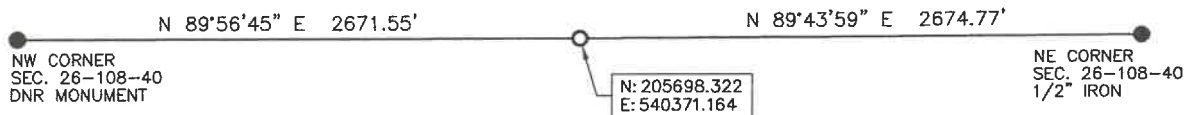
STATE OF MINNESOTA, County of MURRAY

Statement of Evidence

N1/4 Sec. 26-108-40

Nov. 20, 1969, Murray County Highway Department found field stone, placed steel pin above stone and placed ties.

May 8, 2023, Buetel-Moseng Land Surveying searched for corner and found nothing. One tie in power pole remained. Obtained road plans from highway department which showed a station distance from northwest corner. Computed a distance-distance intersect with station distance and tie distance from power pole. Set a 3" survey spike



Murray County Coordinate System (1996 Adj.)

